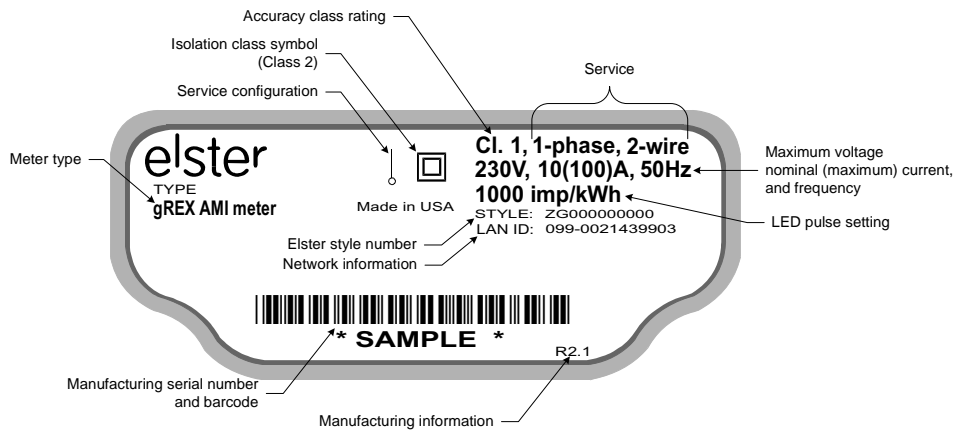


# gREX™ meter nameplate and style numbers

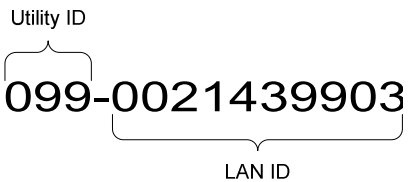
## Nameplate information

The gREX meter nameplate provides important information about the meter. The following figure is an illustration of the standard gREX meter nameplate for a self-contained (direct connect) meter.

**Figure 1. Sample standard nameplate**



The network identification displays the following information:



The utility ID is the same for all meters that are part of the same network. The LAN ID is unique for each meter.

The manufacturing information identifies the meter firmware version and revision numbers as well as the date of manufacture.

**Table 1. Manufacturing information**

Code	Description
R2	Meter firmware version number
.1	Meter firmware revision number



## Style number information

The following table lists the commonly used styles for the gREX meter and the options that are available. The standard options are listed in **bold** type.

	ZG	A7	4	0	00	5	00
gREX meter							
<b>SERVICE</b>							
<b>1 phase, 2 wire, self contained, symmetrical, 5 A (100 A max)</b>		<b>A7</b>					
1 phase, 3 wire, self contained, symmetrical, 5 A (100 A max) <sup>1</sup>		C7					
1 phase, 2 wire, self contained, symmetrical, 5 A (120 A max) <sup>2</sup>		AA					
<b>MAIN CIRCUIT BOARD</b>							
<b>240 VAC, 902 MHz to 928 MHz radio, option board ready</b>			<b>4</b>				
120 VAC, 902 MHz to 928 MHz radio, option board ready <sup>1</sup>			2				
<b>RELAYS AND SERVICE CONTROL SWITCH</b>							
None						0	
Service control switch						A	
Service control switch, one 32 A relay <sup>1</sup>						B	
One 32 A relay <sup>1</sup>						1	
<b>COMMUNICATION OPTION BOARDS</b>							
None						00	
2.4 GHz ZigBee communications <sup>1</sup>						B0	
<b>METER COVER OPTIONS</b>							
<b>Short wiring cover</b>						<b>5</b>	
Long wiring cover						1	
Long wiring cover, clear <sup>1</sup>						3	
<b>RESERVED</b>							
Reserved							00

<sup>1</sup>See Elster for availability.

<sup>2</sup>Non-standard option. Use only if 120 A rating is required without service control switch.

Style numbers are subject to change without notice. Contact Elster for availability.

Information contained herein subject to change without notice. Product specifications may change. Contact your Elster representative for the most current product information.

ALPHA, ALPHA Plus, REX, and EnergyAxis are registered trademarks of Elster. Metercat, AlphaPlus, REX2, REX2-EA, and gREX are trademarks of Elster. Other products and company names mentioned herein may be the trademarks and/or registered trademarks of their respective owners.

© 2008 by Elster. All rights reserved. Published in the United States.

**Elster**  
208 S Rogers Lane  
Raleigh, NC 27610-2144  
United States

T +1 919 212 4700  
T +1 905 634 4895 (Canada)  
F +1 919 212 4801

support@us.elster.com  
www.elster.com